

# Getting Started with CorelDRAW Graphics Suite X3

## Worksheet # 6

### Fit Text to Path

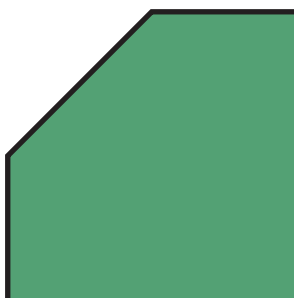
Instructions: Place the following steps in the correct order.

- \_\_\_\_. Point to the path
- \_\_\_\_. Create Text
- \_\_\_\_. Use the Property Bar to Adjust Settings
- \_\_\_\_. Click to Set the Position
- \_\_\_\_. From the Menu, choose Text > Fit Text to Path
- \_\_\_\_. Drag to Set the Horizontal Position and Vertical Distance
- \_\_\_\_. Draw a Path (ie. Line or Shape)
- \_\_\_\_. Select Text

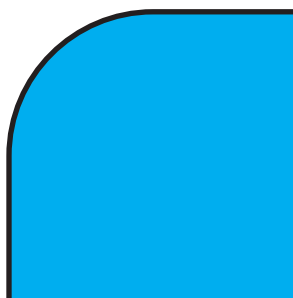


### Fillet, Scallop & Chamfer

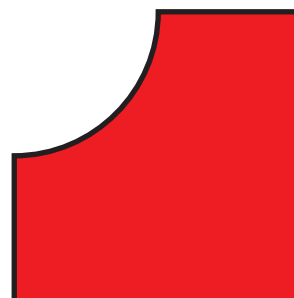
Instructions: Identify each effect by writing it's name in the space provided



\_\_\_\_\_



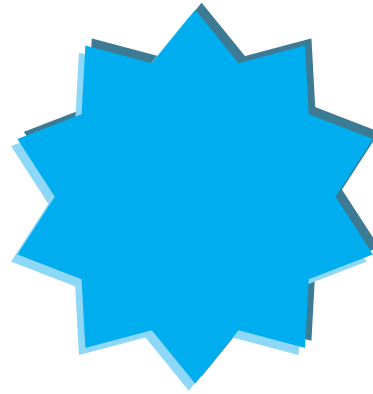
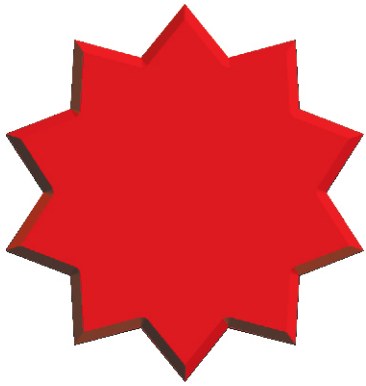
\_\_\_\_\_



\_\_\_\_\_

## Bevel and Emboss

Instructions: Carefully examine the examples below. Identify them as either embossed or soft edge beveled, and highlight the differences.



Instructions: Using the dialog to the right, enter the appropriate degrees for direction and altitude into the circles below.

Light Controls

Light Color:

Intensity:

Direction:

Altitude:

